

## GPS Airborne

Dave Typinski, August 2011

While returning from Hawaii to Florida, one leg of the journey consisted of a trip from Los Angeles to Minneapolis aboard a 757-300.

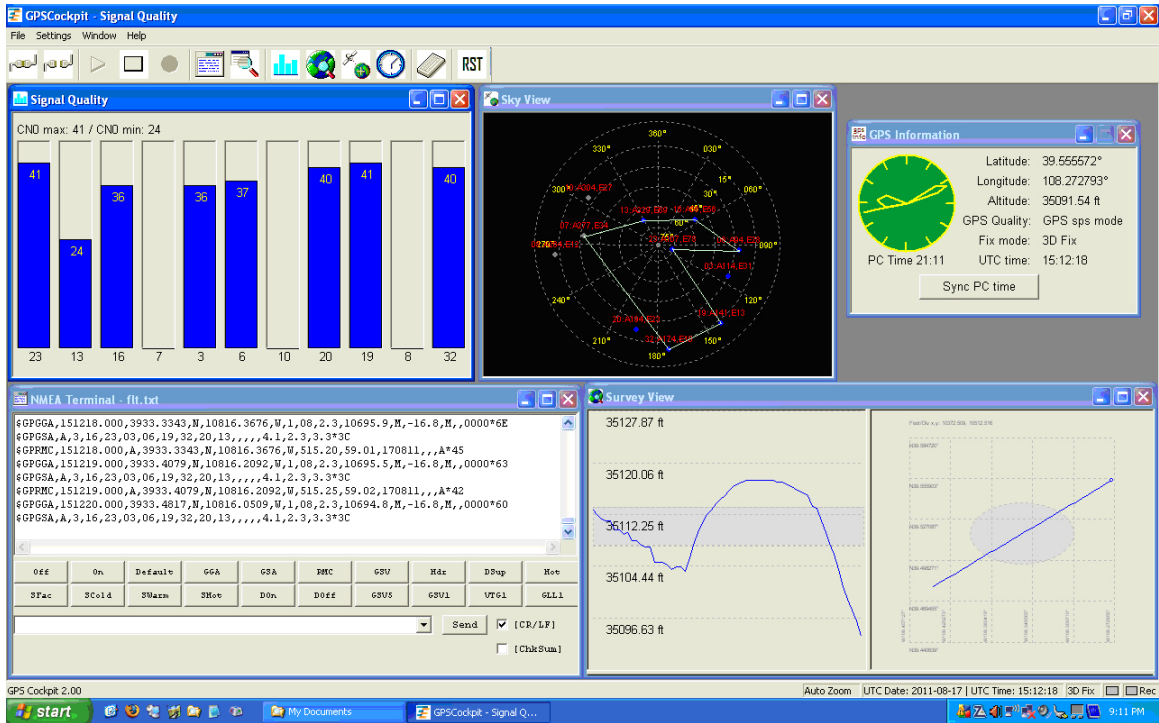


I decided to have some fun and see if my GPS receiver would work when placed against the inside of a passenger window.<sup>1</sup> It fit snugly between the window shade and the inner transparency.

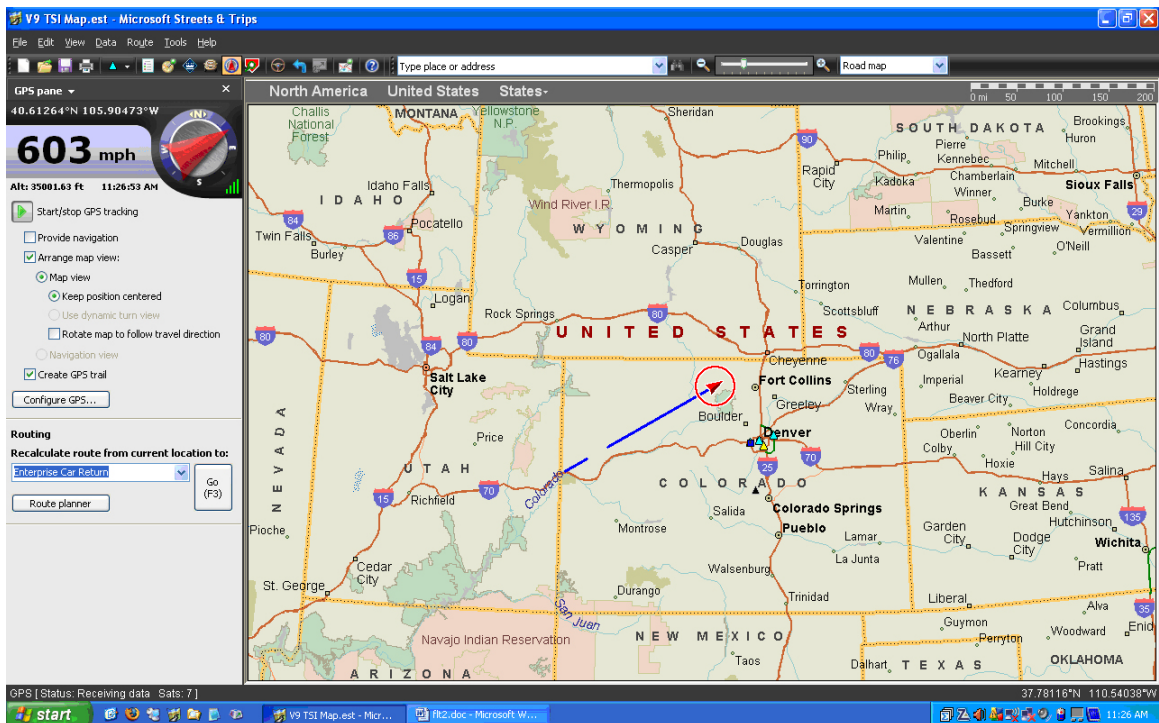


<sup>1</sup> Pharos GPS500, \$40 from Compuvisor. It spits out standard NMEA sentences via USB.  
< <http://www.compuvisor.com/gps-receiver-microsoft-pharos-gps-500-gps-receiver-for-pc.html> >

It worked! GPS Cockpit running under Windows XP on my Acer laptop shows the data coming in from the receiver through a USB port.<sup>2</sup>



To obtain a real-time moving map, I started Microsoft Streets & Trips 2009. Nice! The blank part in the GPS trail is where I ran GPS Cockpit—both applications cannot access the receiver simultaneously.



<sup>2</sup> GPSCockpit is a Windows utility provided by Tyco Electronics / Vincotech that allows a user to examine in detail the information provided by a GPS device. Unfortunately, Vincotech has dropped their line of GPS products. As such, I have made available a 2 MB zip file containing GPSCockpit version 3.1 on my web site. < [http://www.typnet.net/misc/GPS\\_Cockpit\\_v3.1.zip](http://www.typnet.net/misc/GPS_Cockpit_v3.1.zip) >